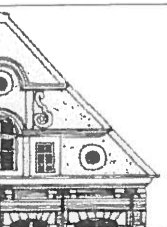
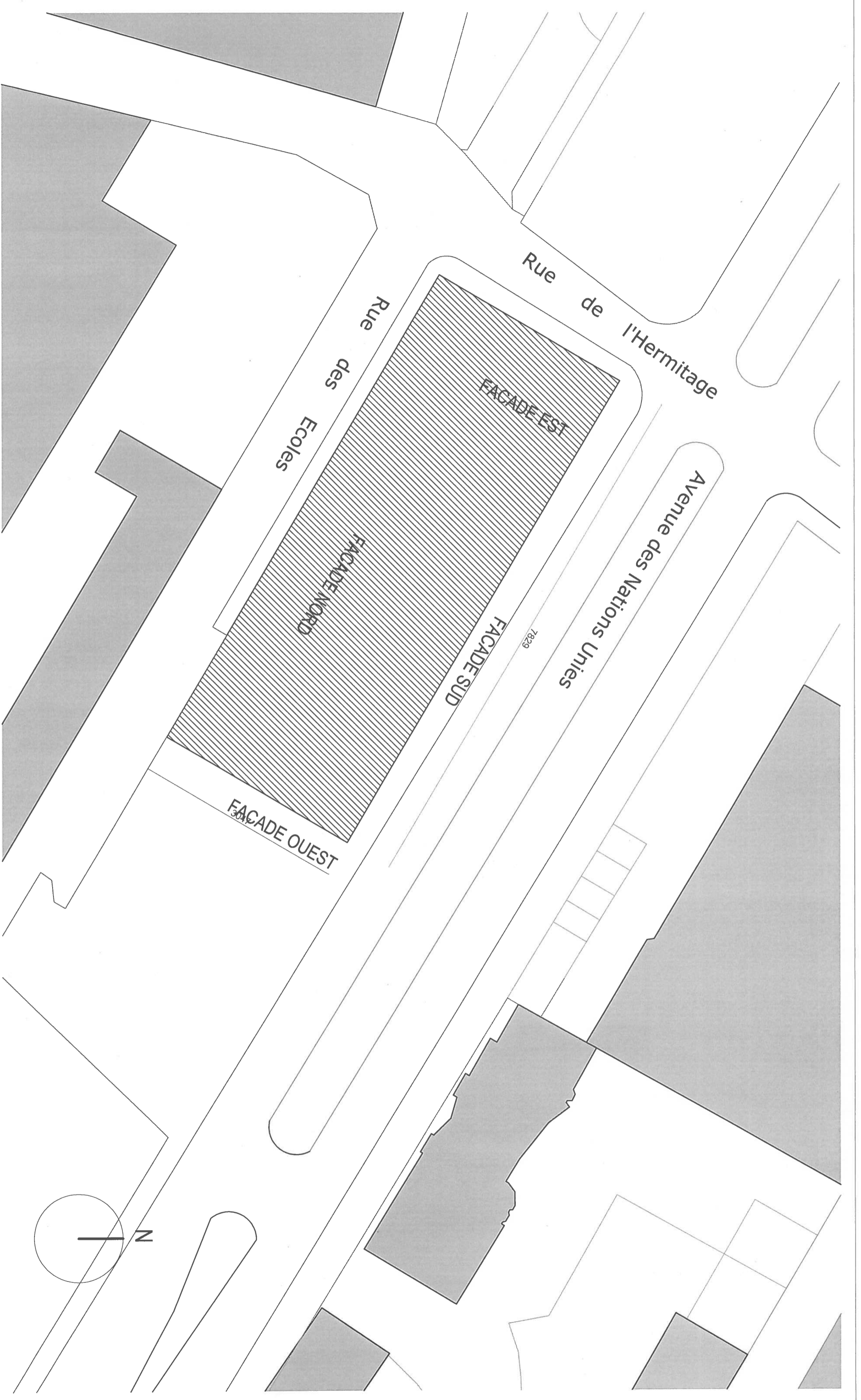


Sommaire des relevés.

Plan masse	p1
Plan de couvertures	p2
Plan de chevronage	p3
Plan de charpentes	p4
Plan des voûtes	p5
Plan au sol	p6
Façade Nord	p7
Façade Sud	p8
Façades Ouest et Est	p9
Coupes transversales fermes basses	p10
Coupes transversales fermes hautes	p11
Coupe longitudinale A-A'	p12
Coupe longitudinale B-B' D-D'	p13
Coupe longitudinale C-C'	p14
Axonométrie ensemble charpentes Nord (A)	p15
Axonométrie ensemble charpentes Sud (B)	p16
Axonométrie demi-fermes	p17
Plan et axonométrie de voûte	p18





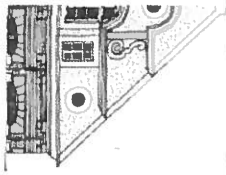
EGLISE NOTRE-DAME, Roubaix, Avenue des nations unies

Plan masse.

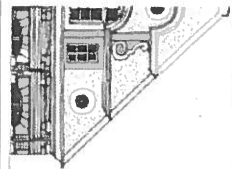
Ech=1/500

Nota: Par convention, nous désignerons par façade Ouest la façade principale donnant sur le parvis.

06.10.08



VARUNELLE A.C.M.H.
1 rue DOVICHE 59000 ARBRES
03 21 96 37 31 fax 03 21 22 06 21
varunelle.acmh@wanadoo.fr



VBRUNELLE A.C.M.H.
1 rue DONCRE 62000 ARRAS
03 21 58 37 33 fax 03 21 22 08 21
vbrunelle.acmh@wanadoo.fr

EGLISE NOTRE-DAME, Roubaix, Avenue des nations unies
Plan de couverture.
Ech=1/200

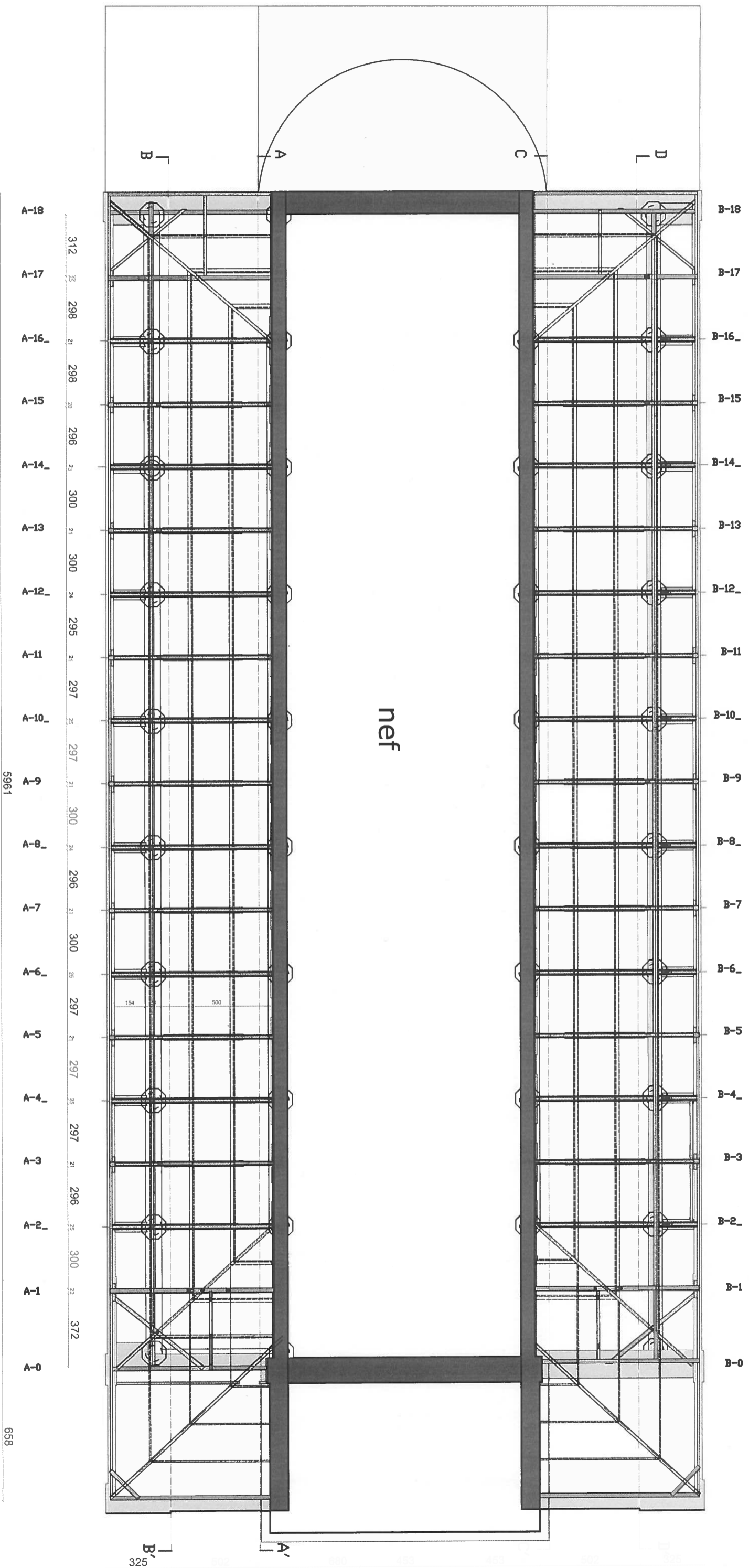
06.10.08



avenue des nations unies

5961

658



rue des écoles

658

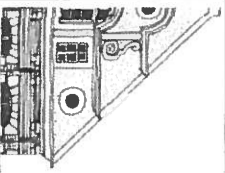
EGLISE NOTRE-DAME, Roubaix, Avenue des nations unies

Plan d'ensemble de charpente.

Ech=1/200

VBRUNELLE A.C.M.H.
1, rue DONCRE 82000 ARIAS
03 21 56 37 33 fax 03 21 22 06 21
vbrunelle.acmh@wanadoo.fr

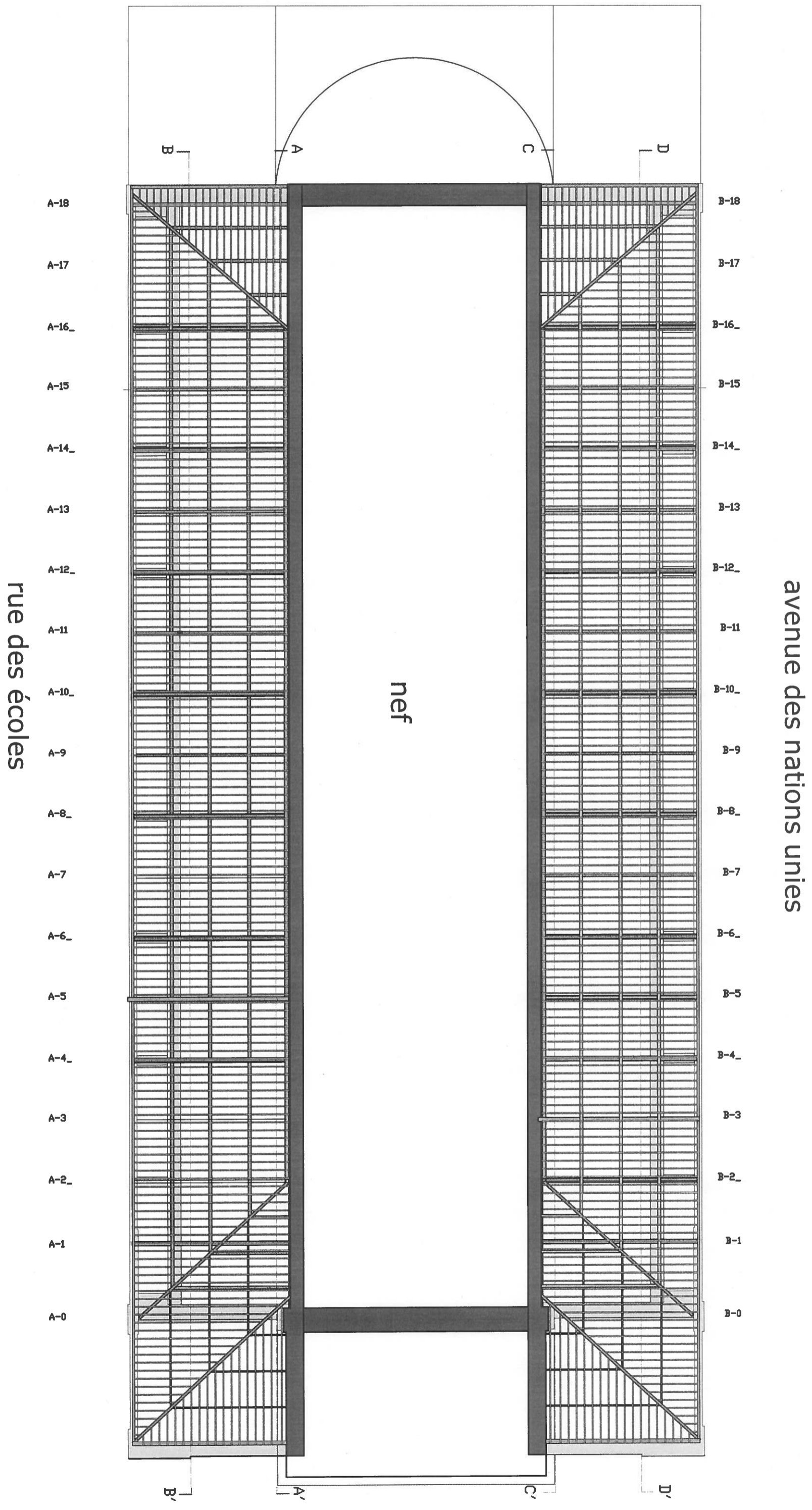
06.10.08



VBRUNELLE A.C.M.H.
1, rue DONCISE 62000 ARRAS
03 21 56 37 33 fax 03 21 22 06 21
vbrunelle.acmh@wanadoo.fr

EGLISE NOTRE-DAME, Roubaix, Avenue des nations unies
Plan de chevronnage _bas côtés
Ech=1/200

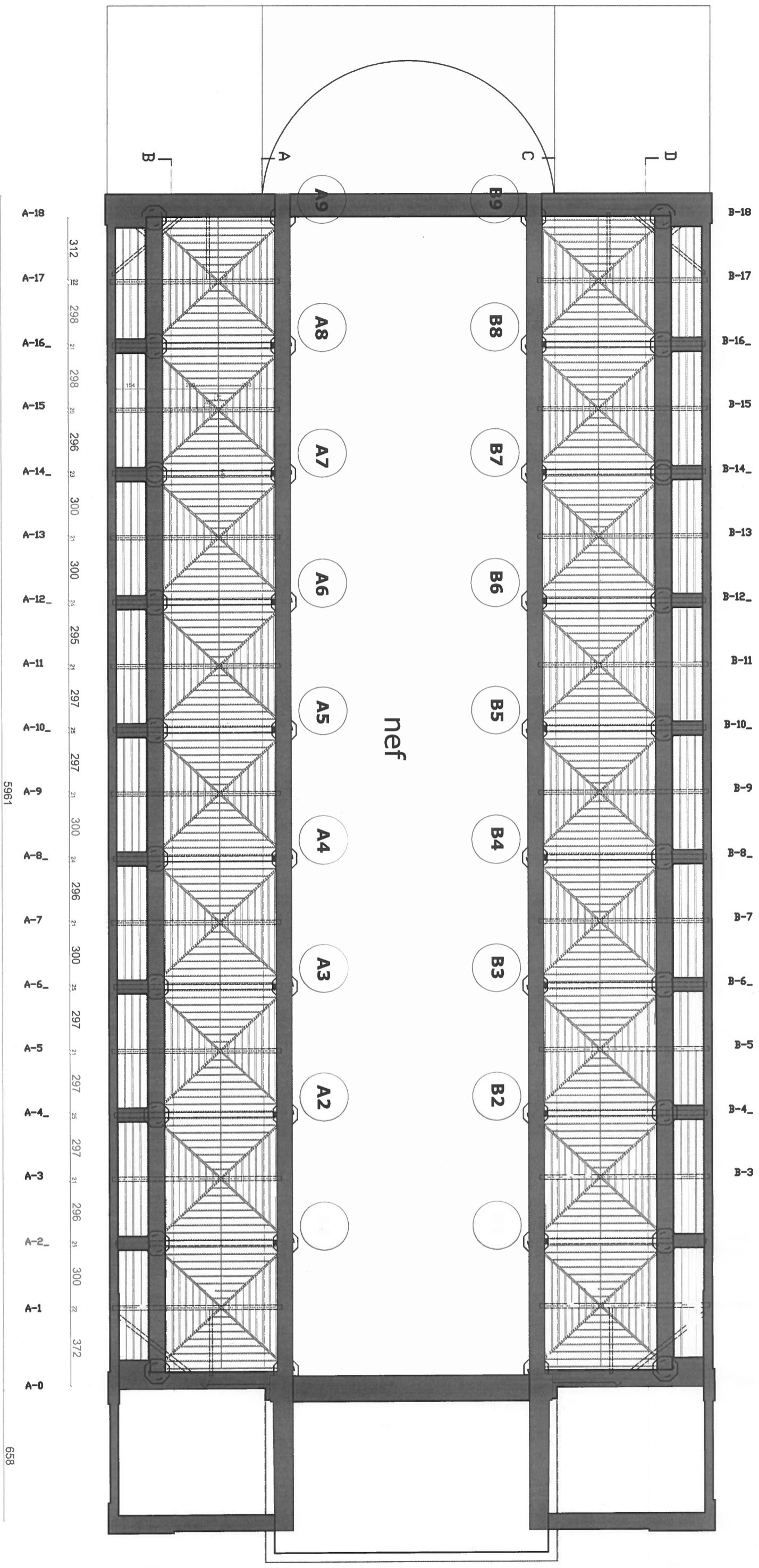
06.10.08



avenue des nations unies

5961

658



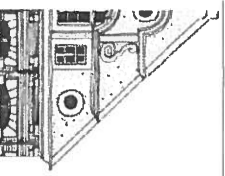
rue des écoles

EGLISE NOTRE-DAME, Roubaix, Avenue des nations unies

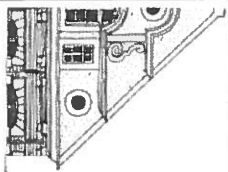
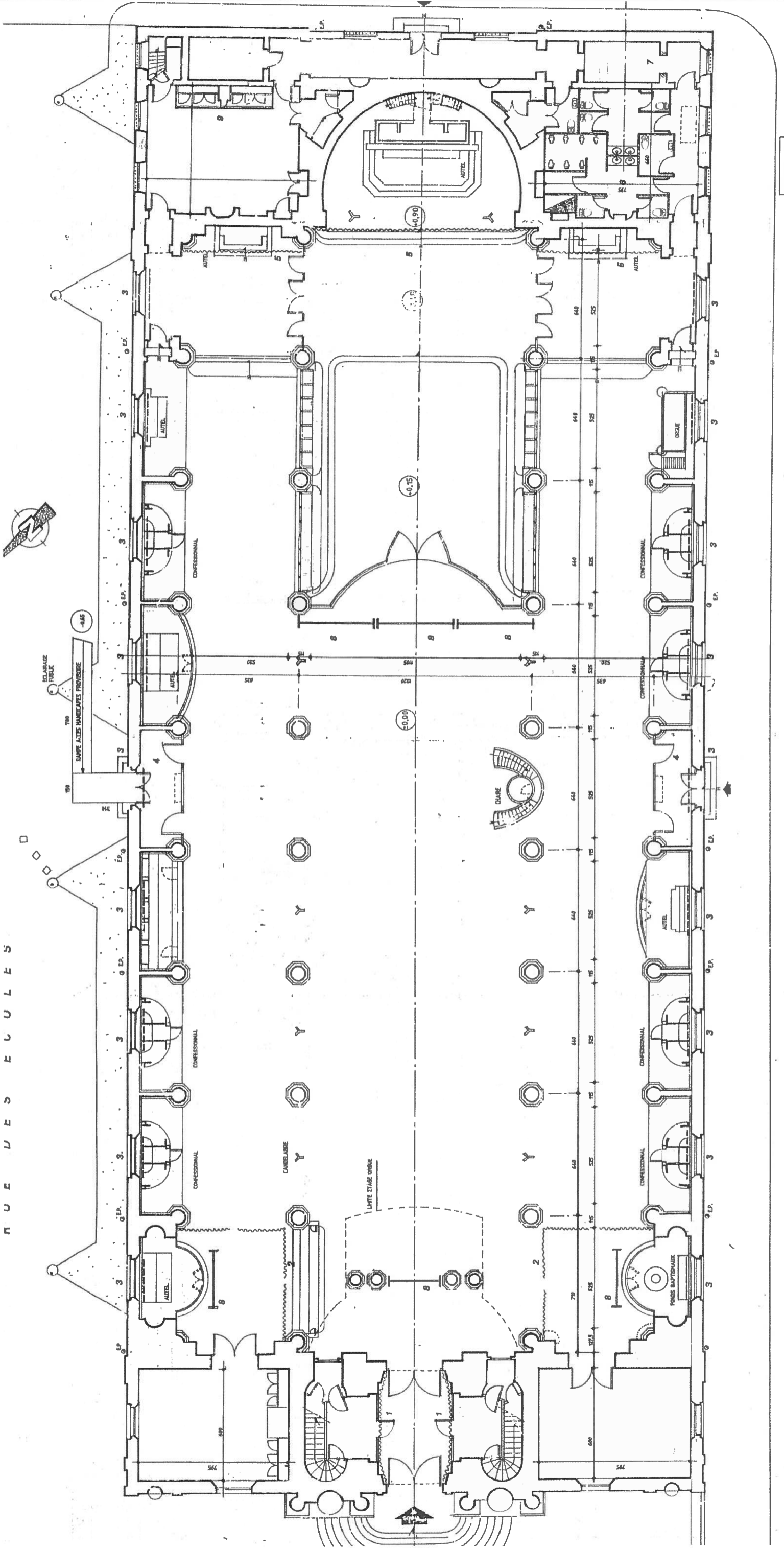
Plan d'ensemble des voûtes

Ech=1/200

V.BRUNELLE A.C.M.H.
1, rue DONCRE 52000 ARRAS
03.21.56.37.33 fax 03.21.22.06.21
vbrunelle.acmh@wanadoo.fr



06.10.08

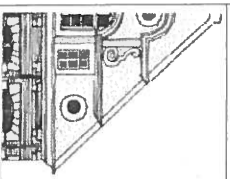
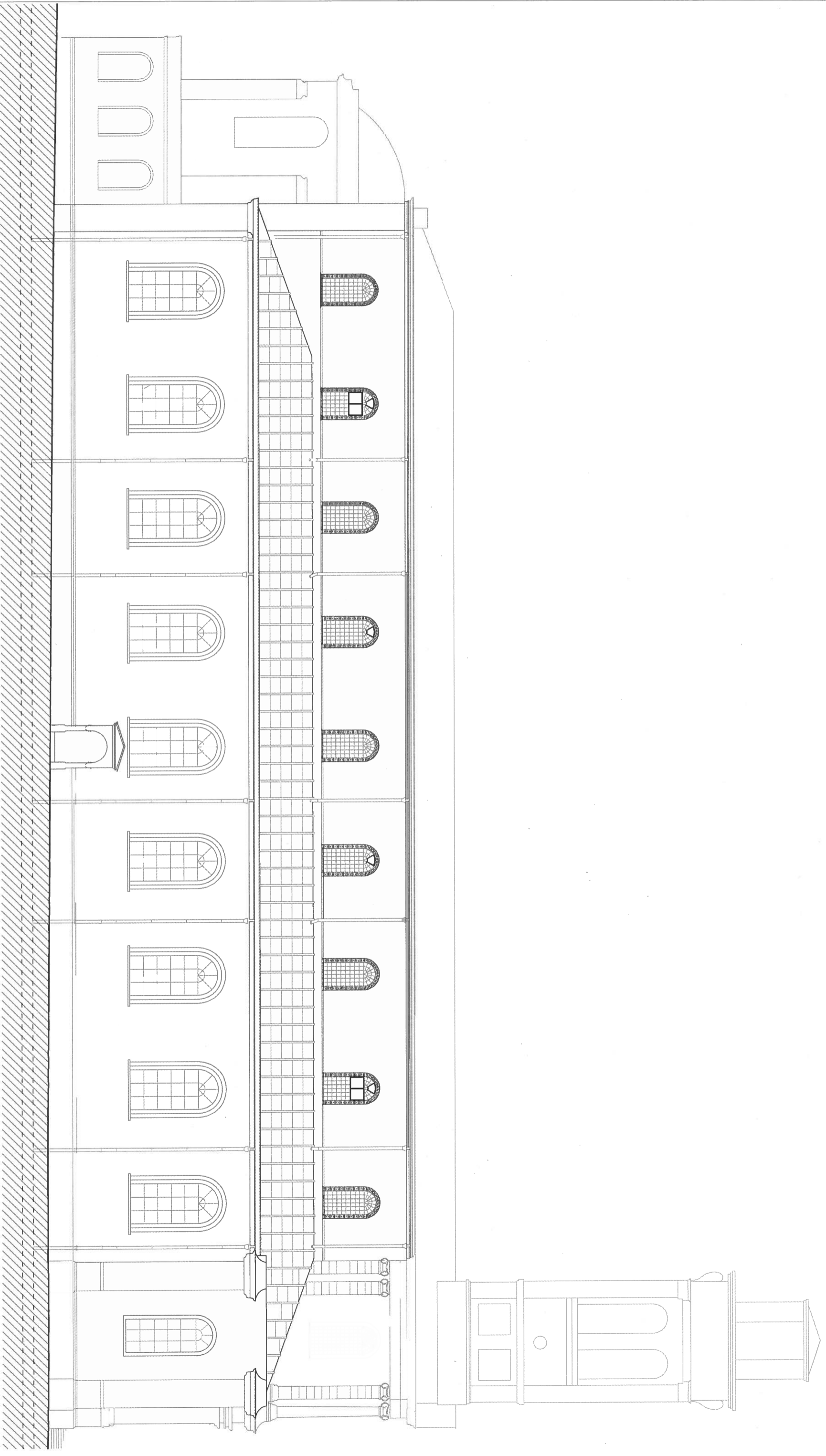


VARRUNELLE A.C.M.H.
 1, rue BONCOURT 59000 ROUBAIX
 03 20 38 33 33 - fax 03 20 38 33 33
 v.varrunelle@wanadoo.fr

EGLISE NOTRE-DAME, Roubaix, Avenue des nations unies
 Plan au sol.
 Ech=1/200

S E T U O U S E N U

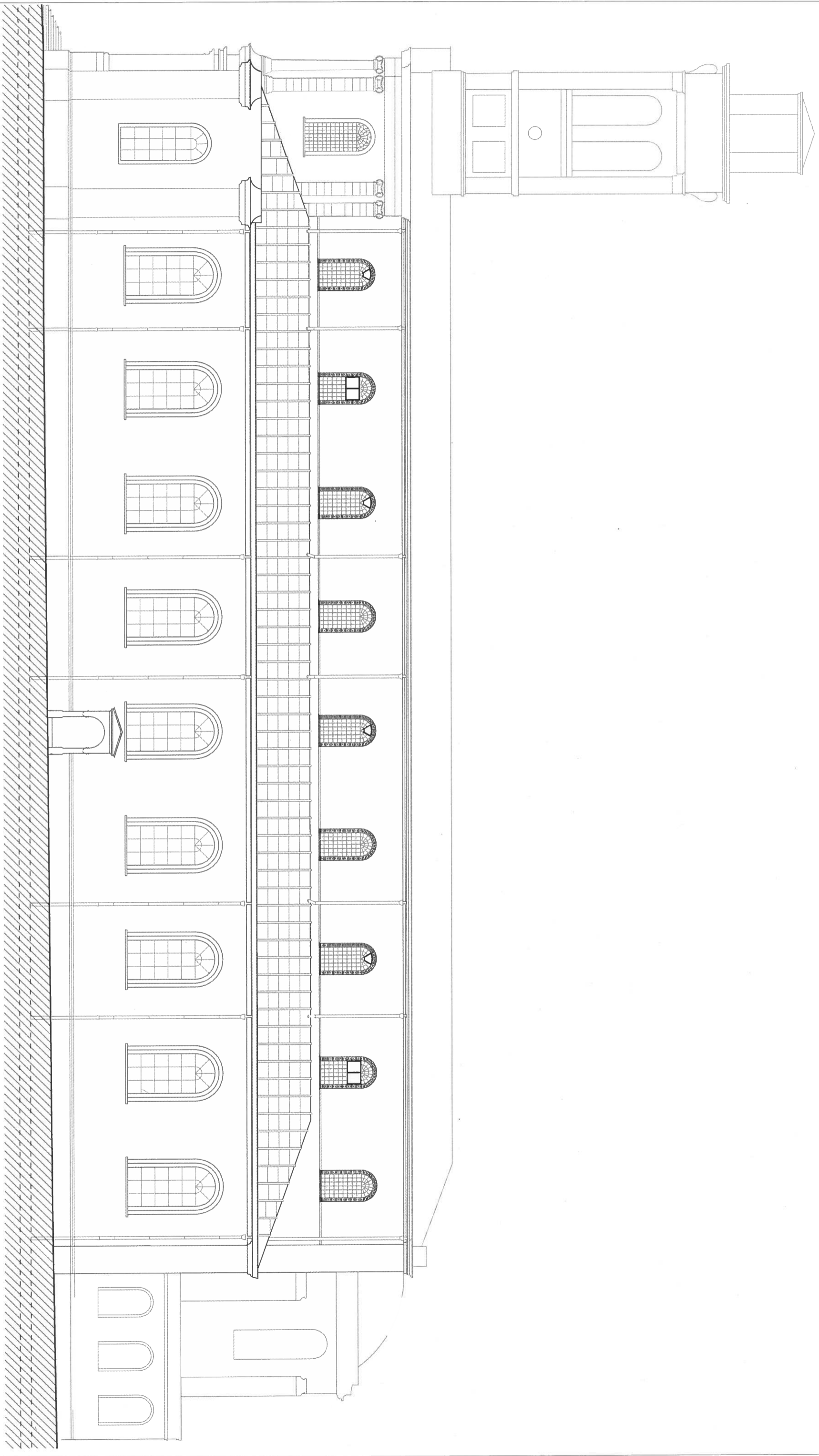
06.10.08



VBRUNELLE A.C.M.H.
1, rue DONGRE 59000 ARBES
03 21 49 37 33 - 03 21 22 06 21
vbrunelle.acmh@wanadoo.fr

ÉGLISE NOTRE-DAME, Roubaix, Avenue des nations unies
Élévation façade Nord (rue des écoles)
Ech=1/200

06.10.08

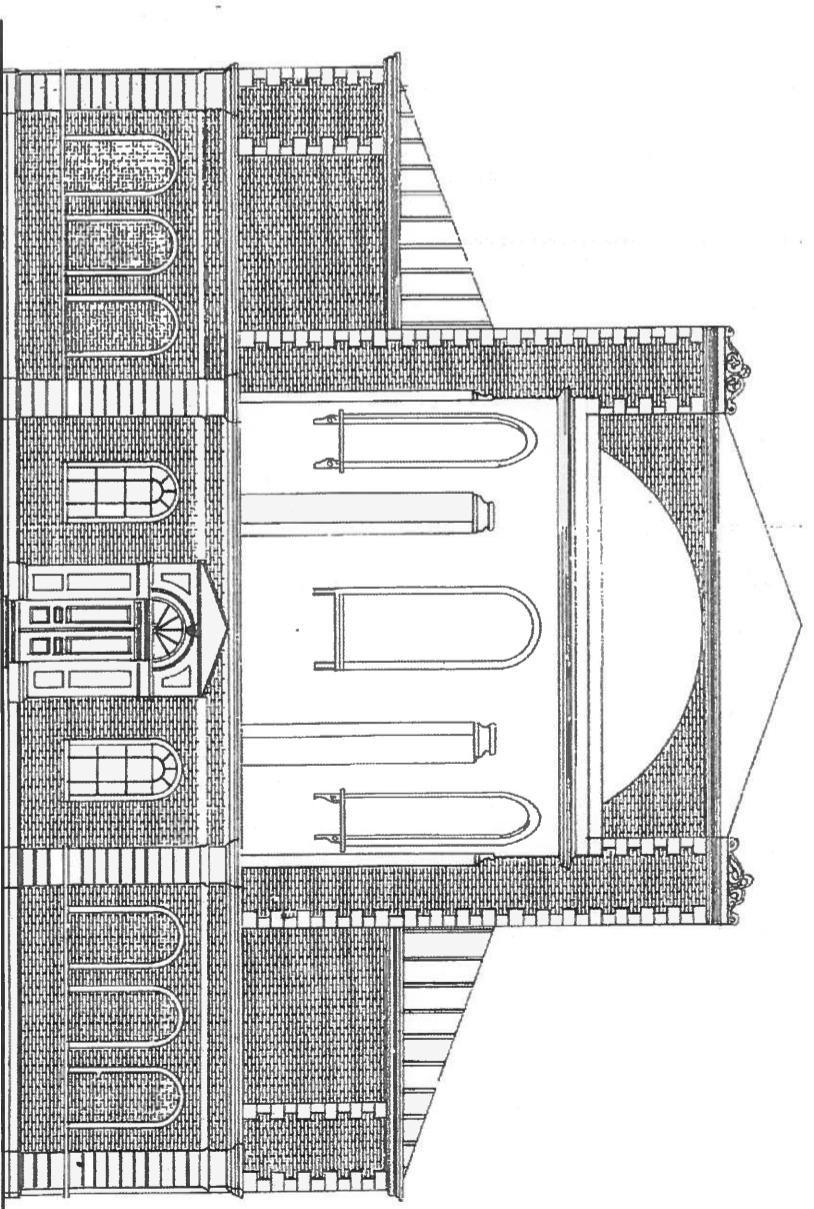
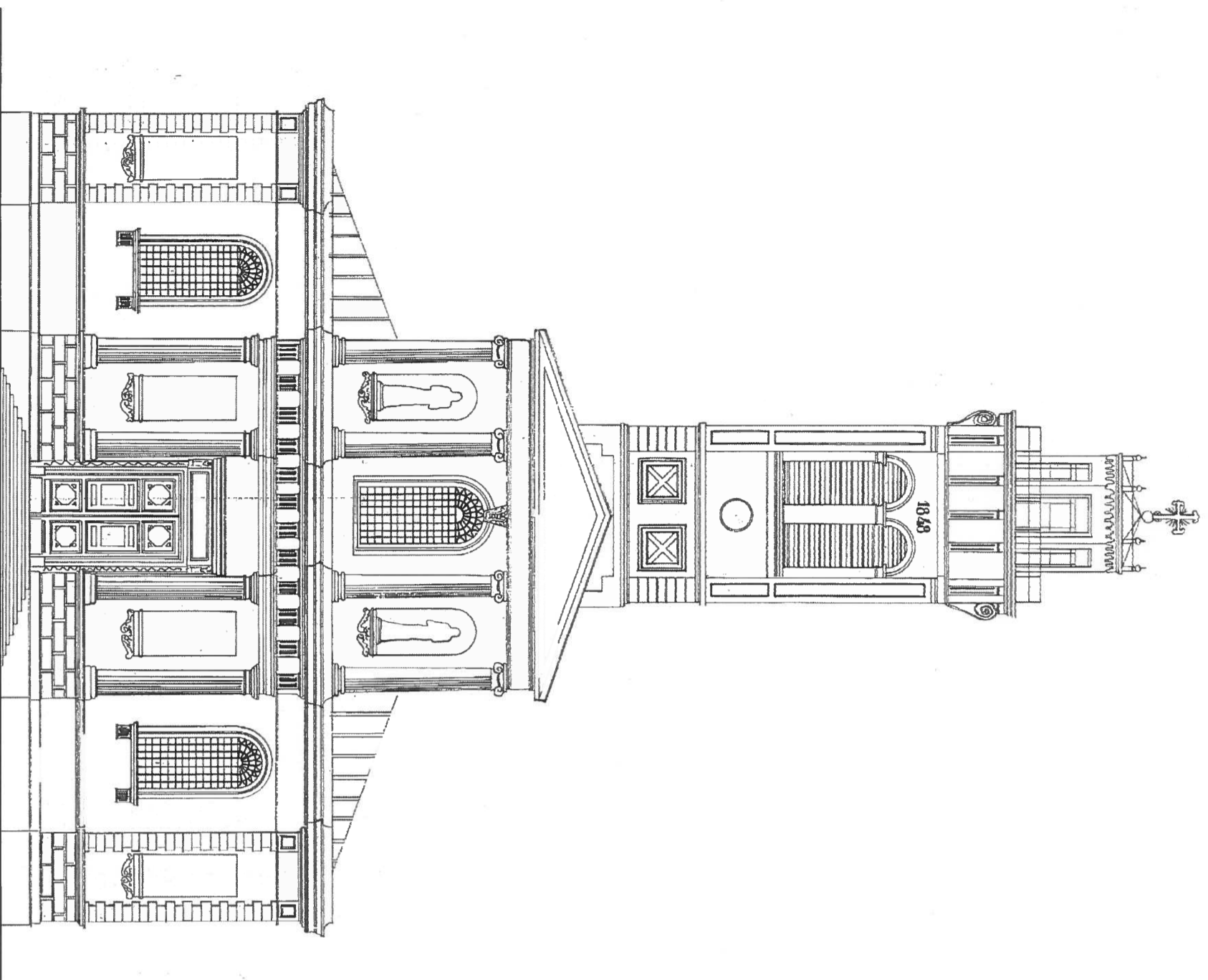


EGLISE NOTRE-DAME, Roubaix, Avenue des nations unies
Elévation façade Sud (Avenue des Nations-Unies))

Ech=1/200

YBRUNELLE A.C.M.H.
1, rue DONGRE 62000 ARRAS
03 21 36 13 33 fax 03 21 22 00 61
ybrunelle.archi@orange.fr

06.10.08

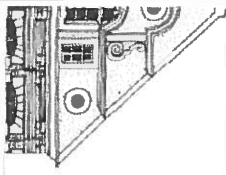


EGLISE NOTRE-DAME, Roubaix, Avenue des nations unies

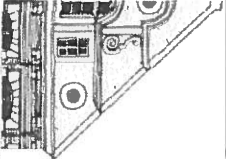
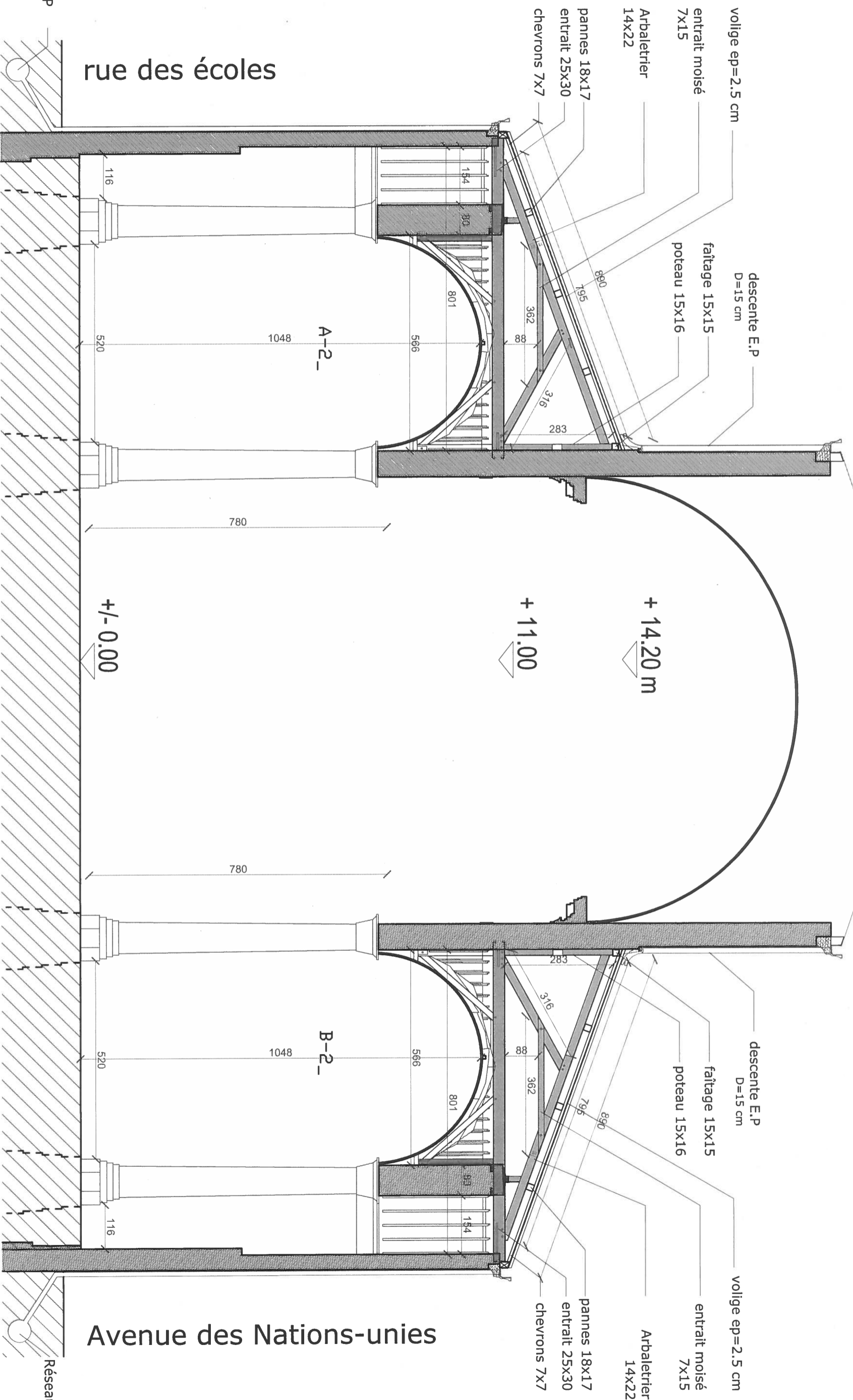
Elévation façade Ouest et Est

Ech=1/200

VARUNELLE A.C.M.H.
 1 rue DONGRE 62000 ROUBAIX
 01 20 43 43 43
 vrunelle.admh@runisudco.fr



06.10.08



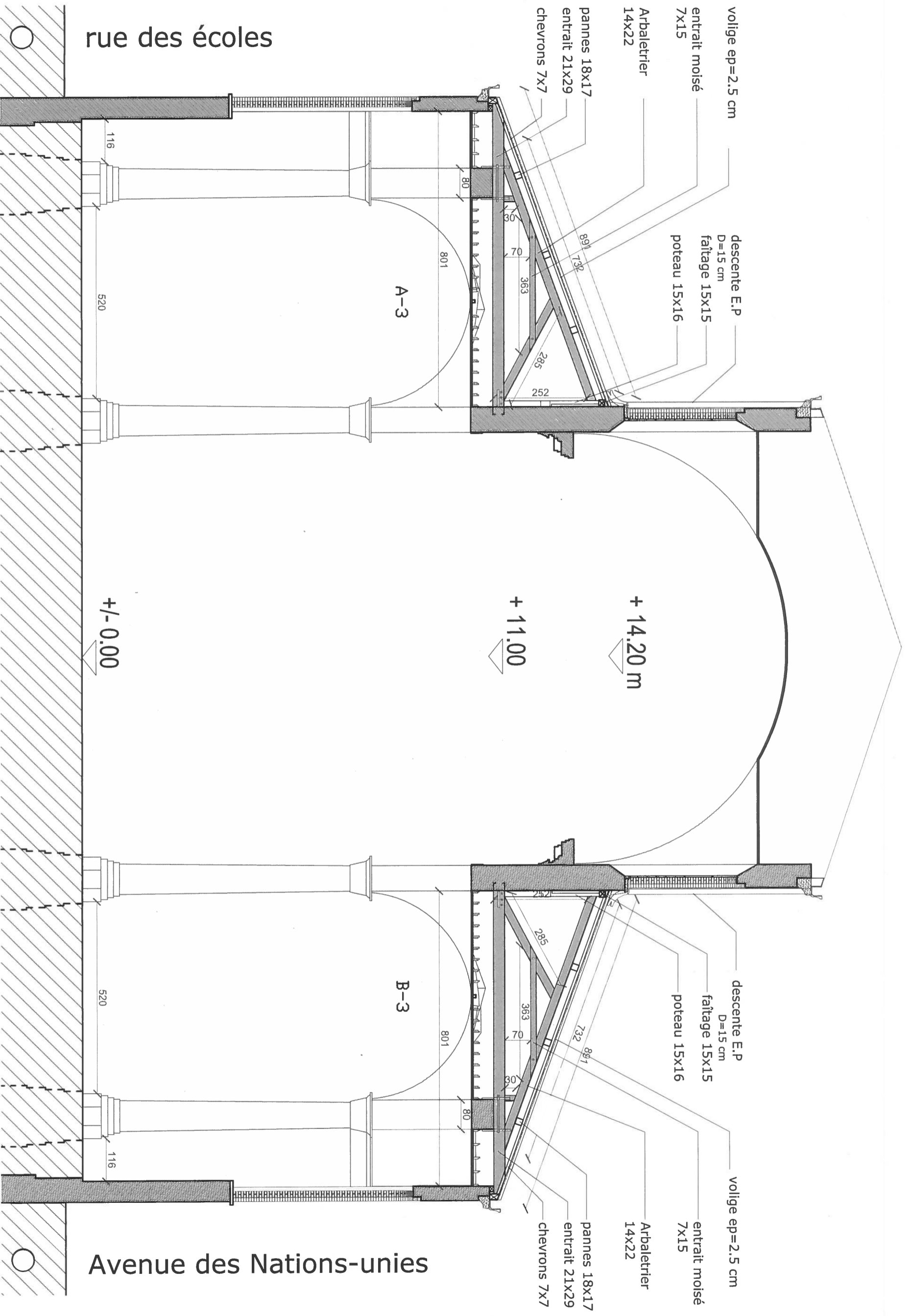
V.BRUNELLE A.C.M.H.
 1, rue DONCRE 52000 ARRAS
 03 21 38 37 33 fax 03 21 22 06 21
 vbrunelle.archi@wanadoo.fr

EGLISE NOTRE-DAME, Roubaix, Avenue des nations unies

Coupe transversale sur demi-fermes (basses).

Ech=1/100

06.10.08



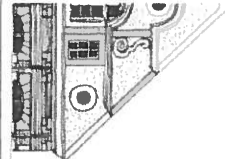
rue des écoles

Avenue des Nations-unies

EGLISE NOTRE-DAME, Roubaix, Avenue des nations unies

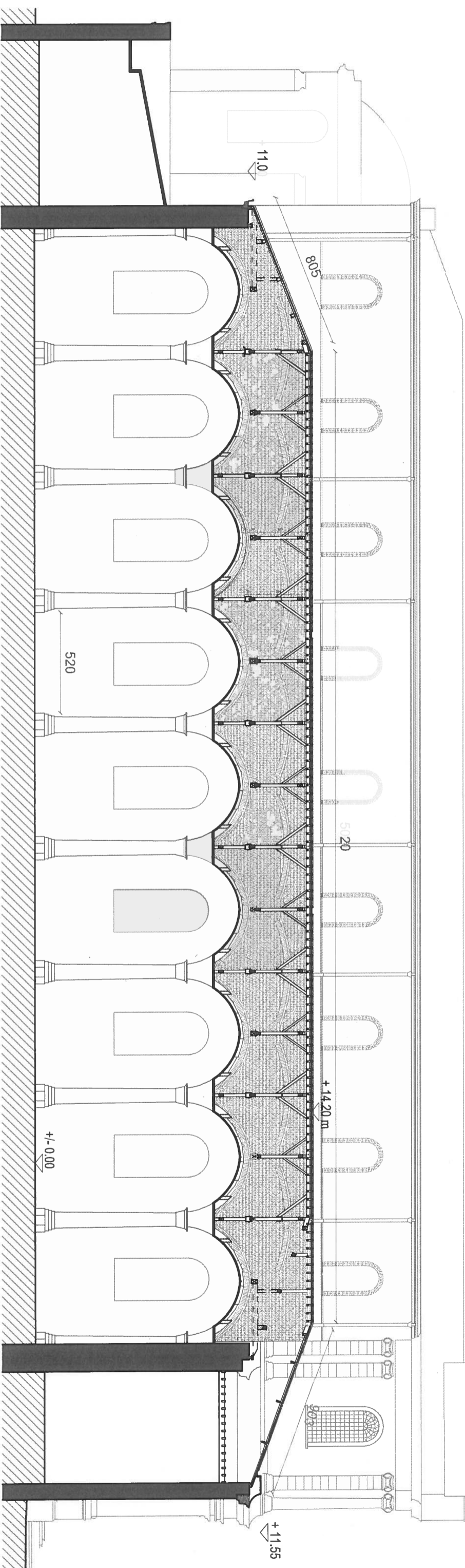
Coupe transversale sur demi-fermes (hautes).

Ech=1/100

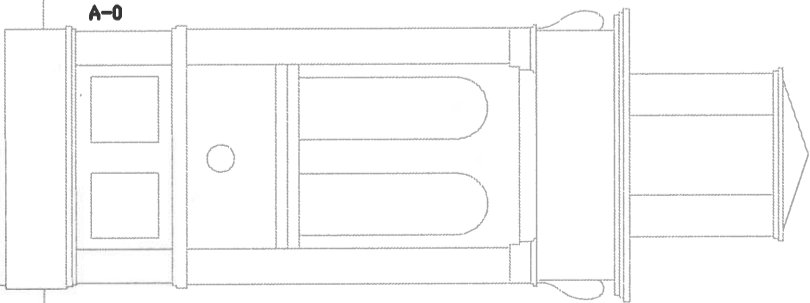


VBRUNELLE A.C.M.H.
 1 rue DONCRE 82000 ARPAIS
 03 21 94 37 33 fax 03 21 22 06 21
 vbrunelle.acmh@wanadoo.fr

06.10.08



- A-18
- A-17
- A-16_
- A-15
- A-14_
- A-13
- A-12_
- A-11
- A-10_
- A-9
- A-8_
- A-7
- A-6_
- A-5
- A-4_
- A-3
- A-2_
- A-1
- A-0



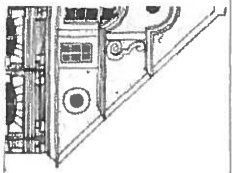
EGLISE NOTRE-DAME, Roubaix, Avenue des nations unies

Coupe longitudinale A-A'

Ech=1/200

VBRUNELLE A.C.M.H.
 1 rue DONCIRE 62000 ARRAS
 03 21 94 37 33 fax 03 21 22 06 21
 vbrunelle.acmh@wanadoo.fr

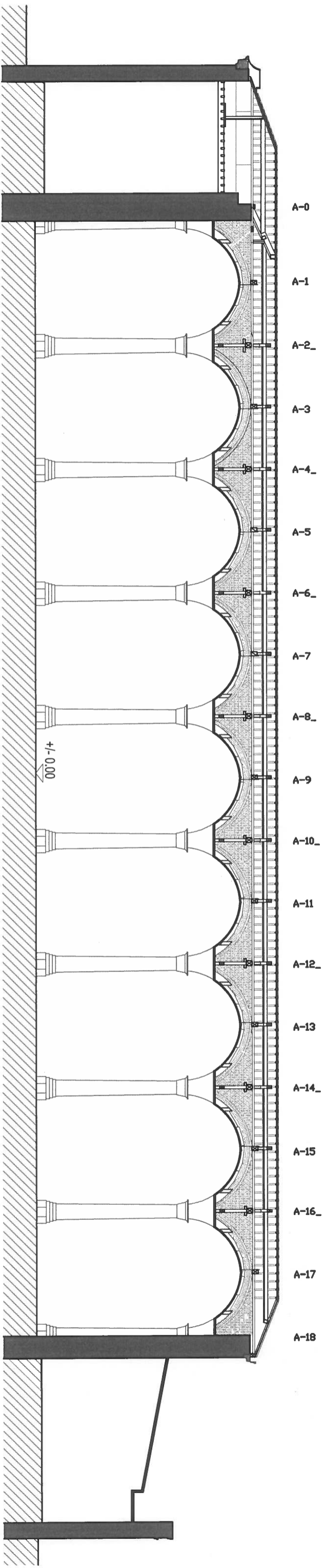
06.10.08



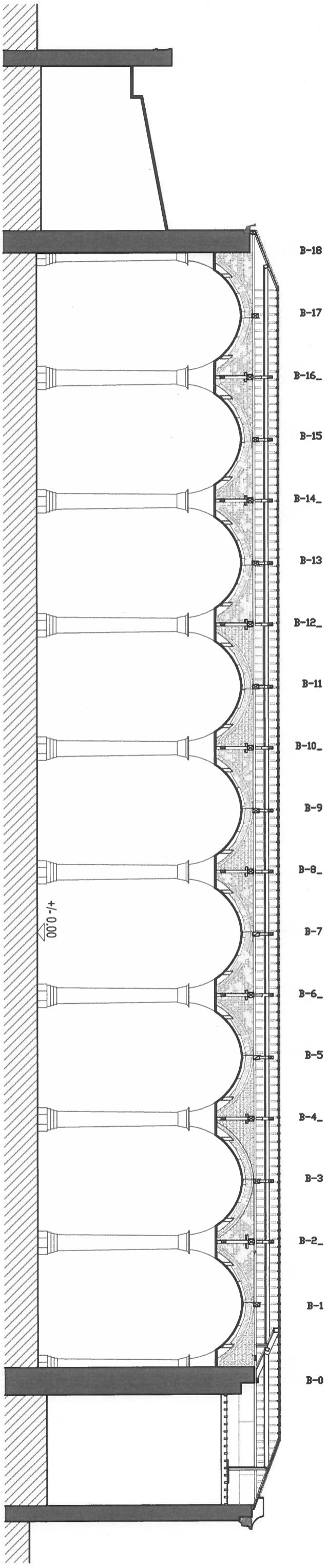
VBRUNELLE A.C.M.H.
 1, rue DONCRES 62000 ARRAS
 03 21 93 37 33 fax 03 21 22 04 21
 vbrunelle.acmh@wanadoo.fr

EGLISE NOTRE-DAME, Roubaix, Avenue des nations unies
Coupes longitudinale B-B' et D-D'
Ech=1/200

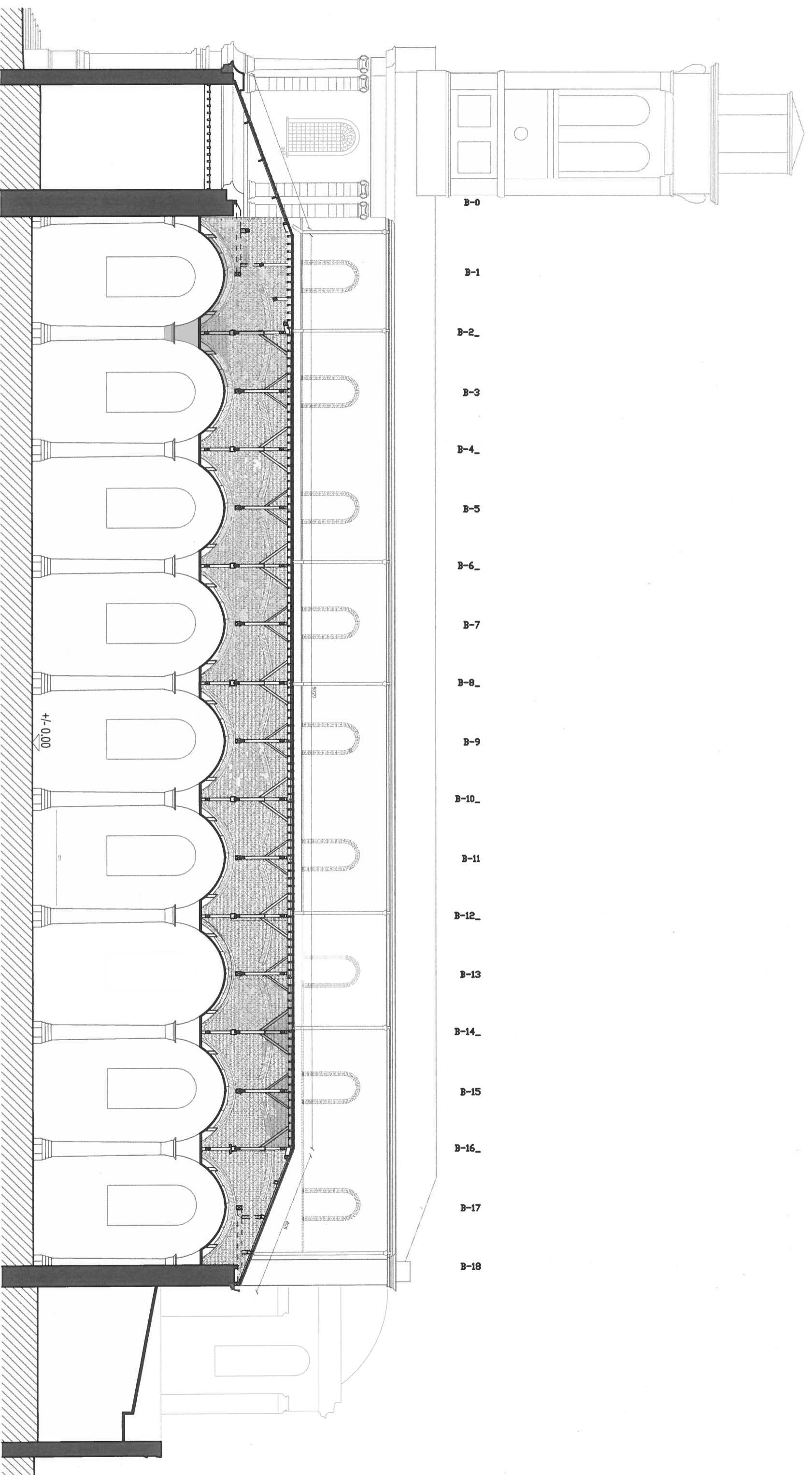
coupe B-B'



coupe D-D'



06.10.08

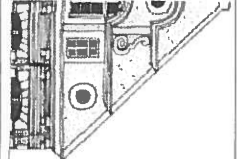


- B-0
- B-1
- B-2_
- B-3
- B-4_
- B-5
- B-6_
- B-7
- B-8_
- B-9
- B-10_
- B-11
- B-12_
- B-13
- B-14_
- B-15
- B-16_
- B-17
- B-18

EGLISE NOTRE-DAME, Roubaix, Avenue des nations unies

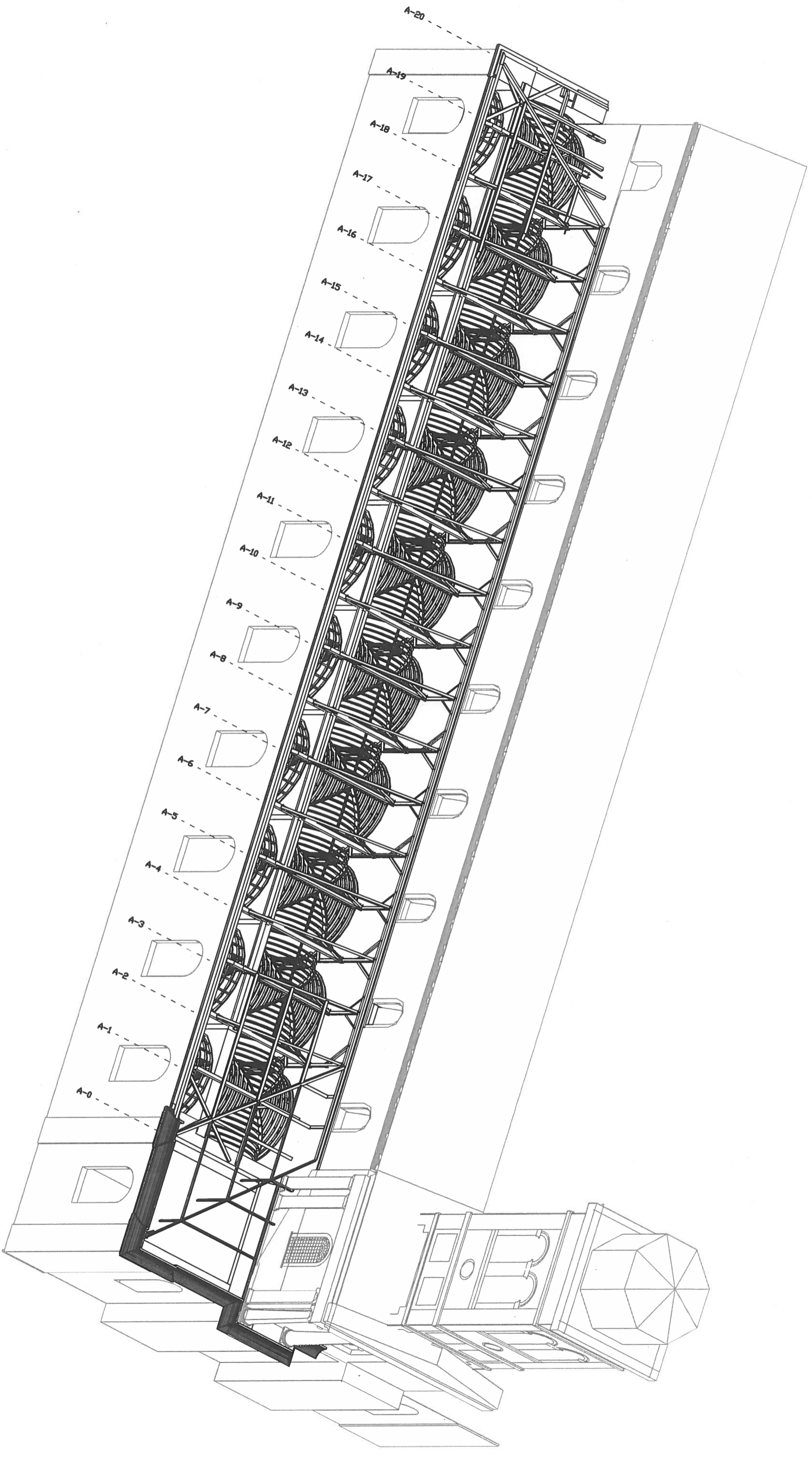
Coupe longitudinale C-C'

Ech=1/200

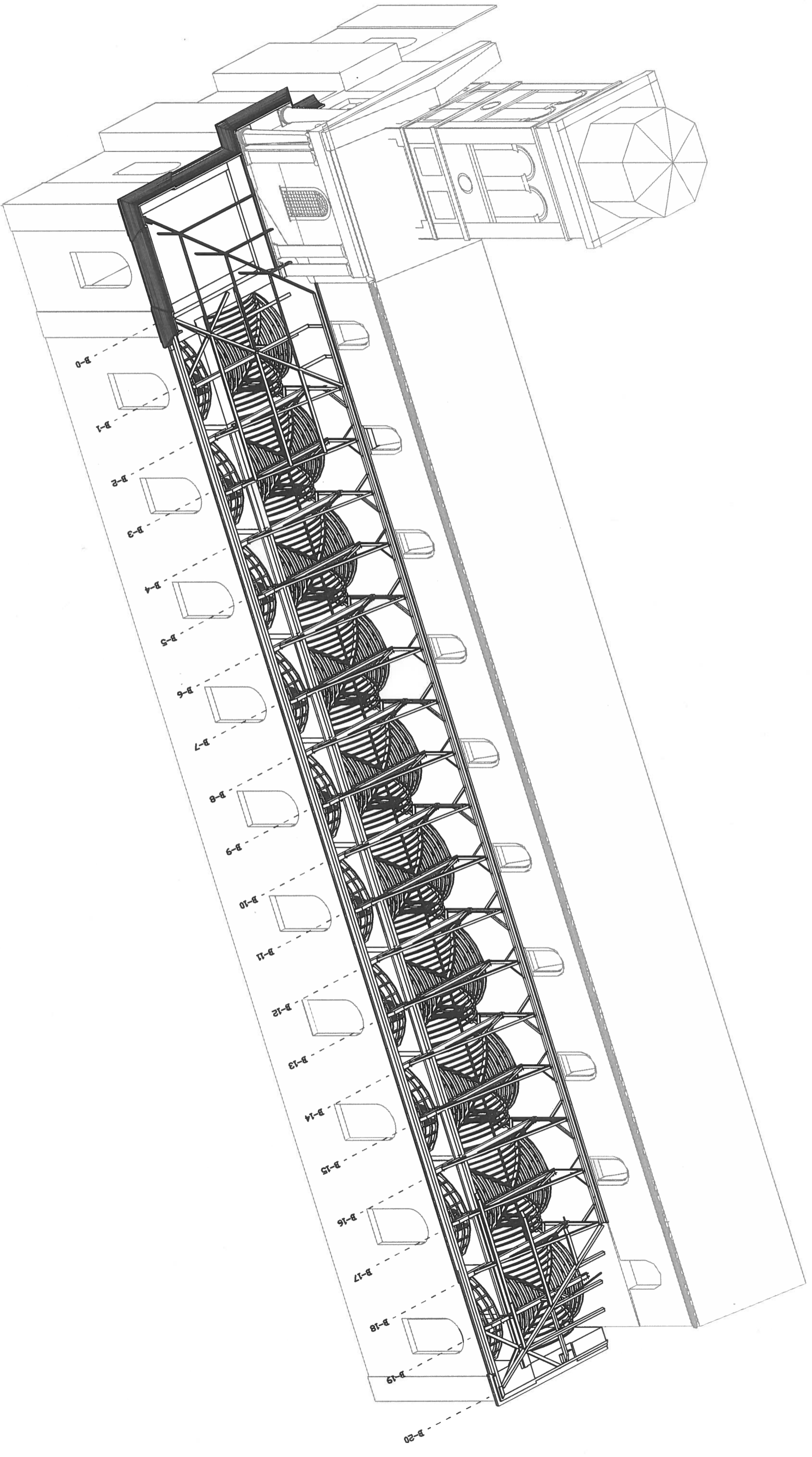


V.BRUNELLE A.C.M.H.
 1 rue DONOIRE 59000 ROUBAIX
 03 20 42 22 23
 v.brunelle.archi@wanadoo.fr

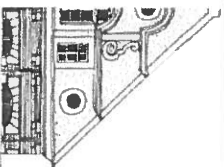
06.10.08



EGLISE NOTRE-DAME, Roubaix, Avenue des nations unies
Axonométrie de l'ensemble charpente Nord (rue des écoles)

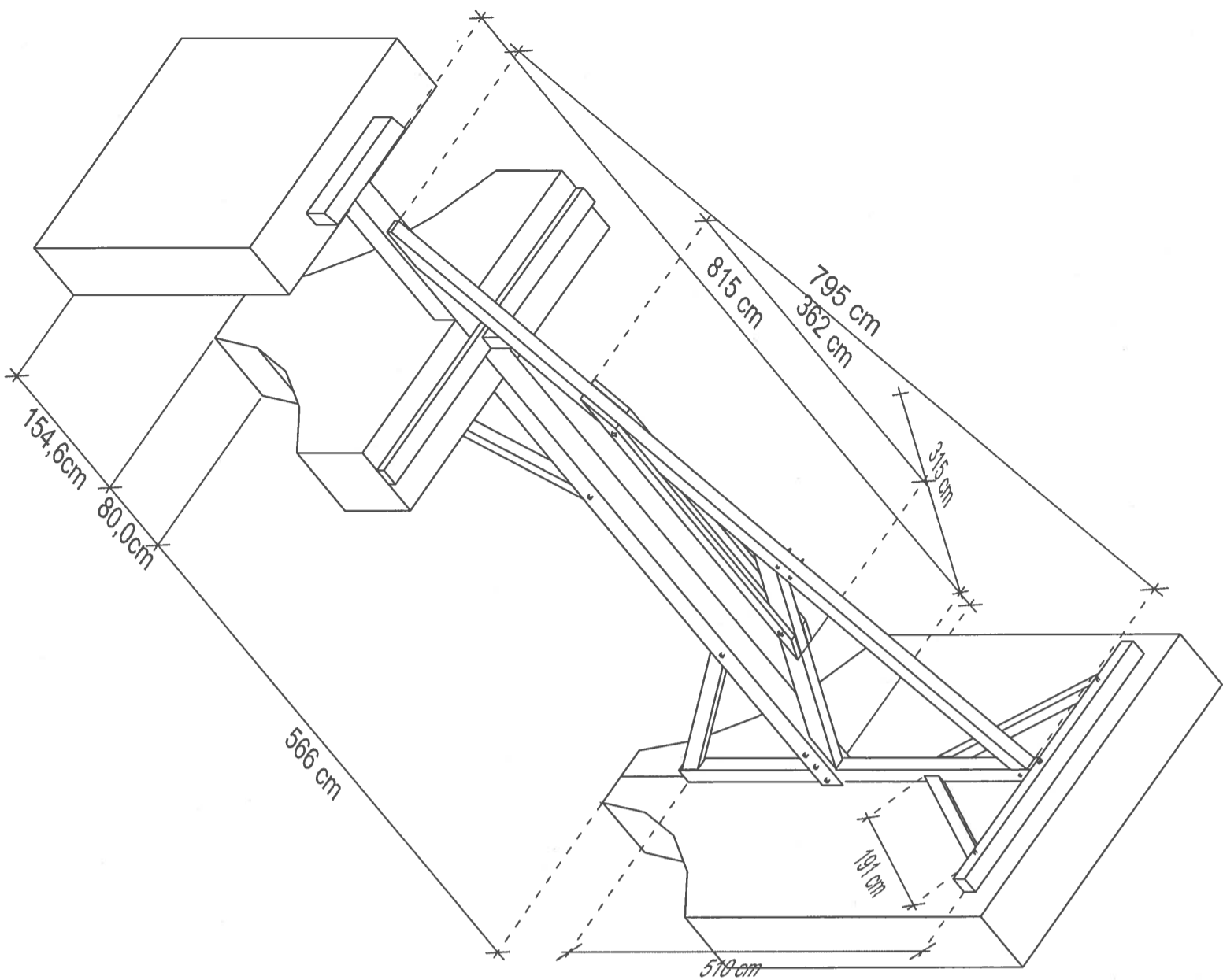


ÉGLISE NOTRE-DAME, Roubaix, Avenue des nations unies
Axonométrie de l'ensemble charpente Nord (Avenue des Nations Unies)

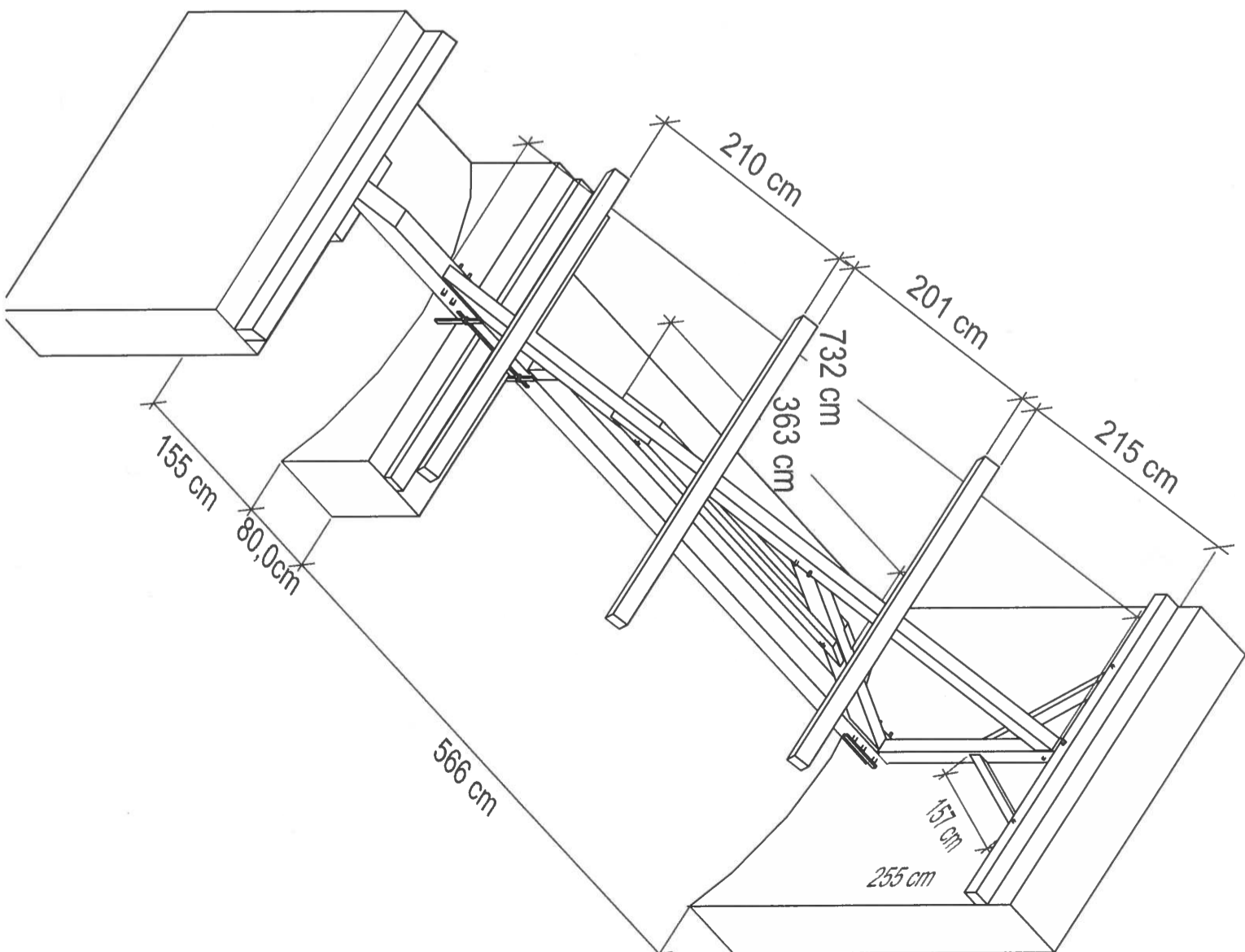


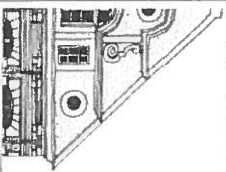
EGLISE NOTRE-DAME, Roubaix, Avenue des nations unies
Axonométrie des demi-fermes (hautes et basses)

demi-ferme basse.



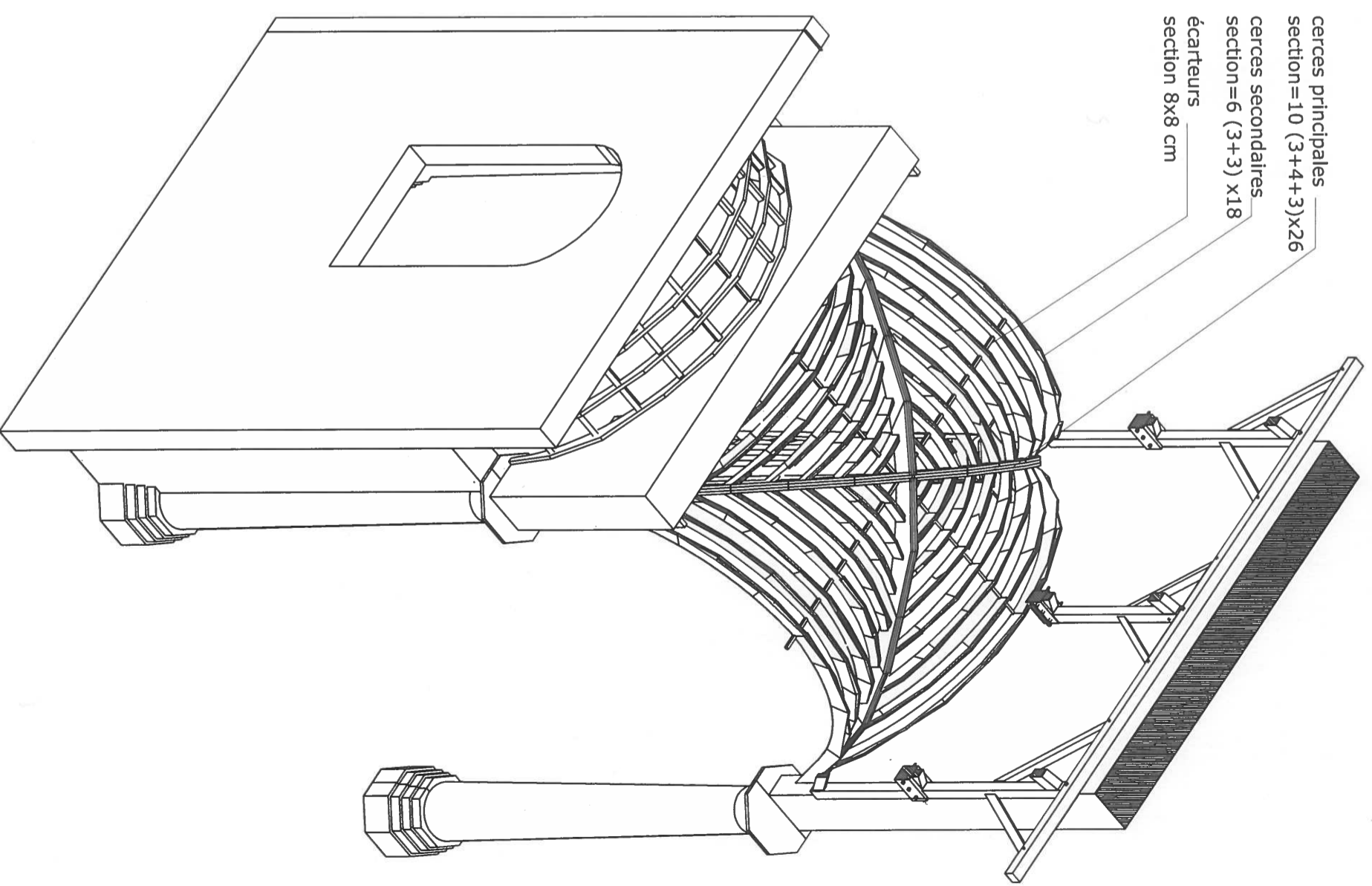
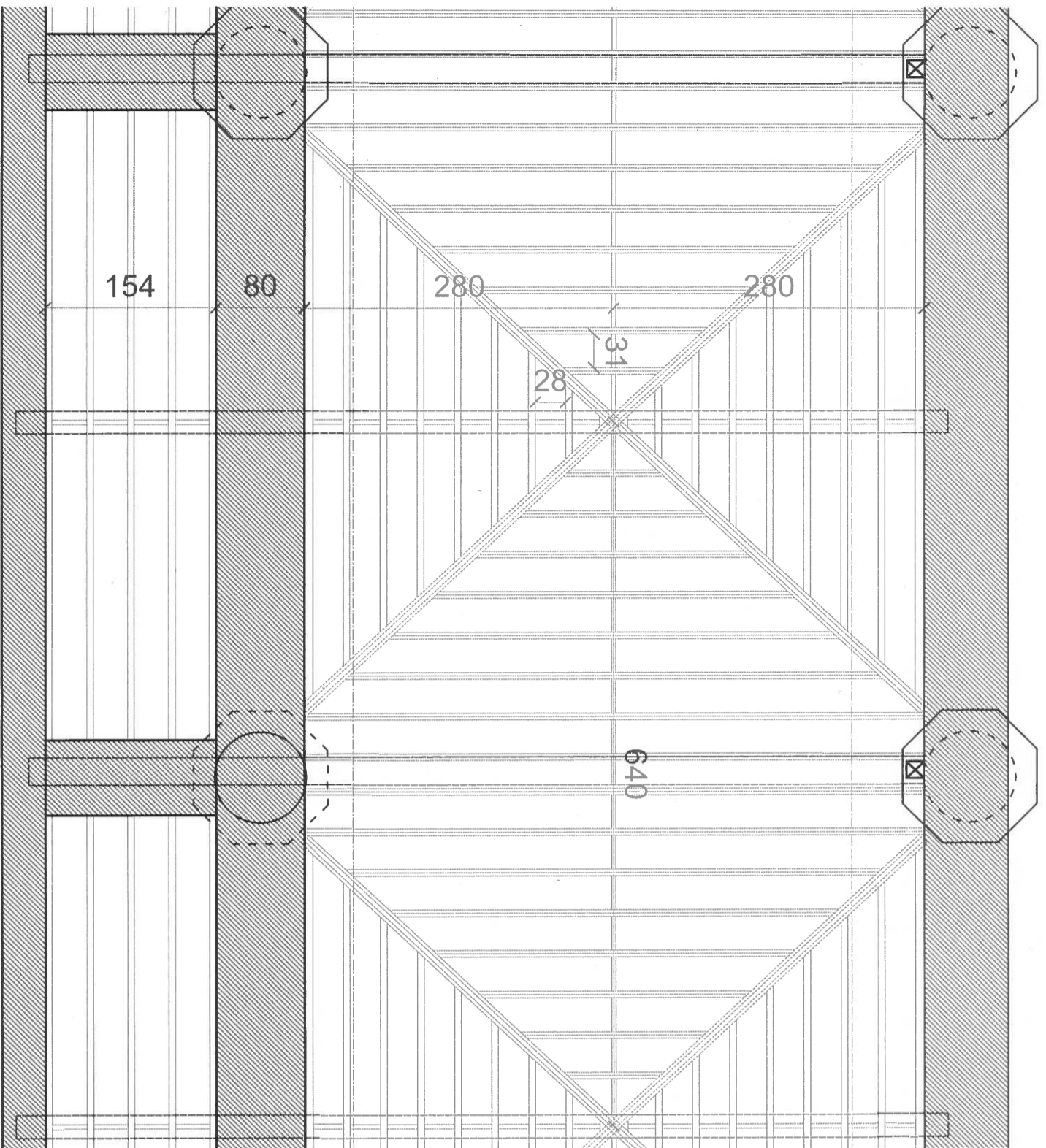
demi-ferme haute.





VARUNELLE A.C.M.M.
 1, rue DONCRE 62000 ARRAS
 03 21 98 37 33 fax 03 21 22 08 21
 varunelle.acmm@wanadoo.fr

EGLISE NOTRE-DAME, Roubaix, Avenue des nations unies
 Plan de voûte
 Ech=1/50



06.10.08